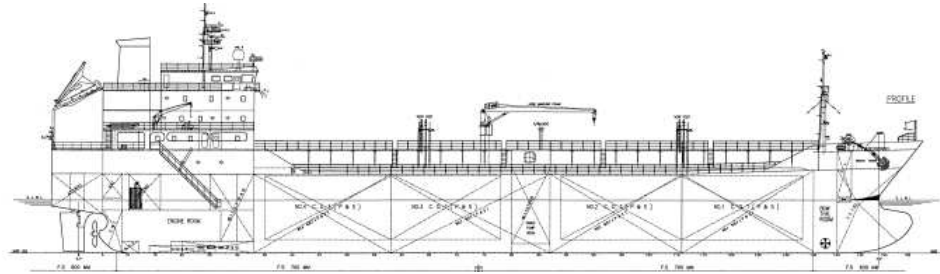


6,100 DWT BITUMEN TANKER GENERAL PARTICULARS



The vessel is designed for the carriage of Bitumen and Product oil.

Classification

BV ✕HULL ✕MACH, Oil tanker ESP / Asphalt, Unrestricted navigation, IWS, +AUT UMS, +Boiler (2*OFB) COMF-NOISE 3 COMF-VIB 3 MON-SHAFT

Flag	-	TBA
Built	-	Geo Marine Engineering & Shipbuilding Co. Ltd, South Korea

Principal Dimensions

Deadweight	-	6,100 tdw
Draft	-	6.70 m
LOA	-	109.9 m
LBP	-	102.00 m
Breath (Moulded)	-	18.20 m

Cargo Tanks

The cargo area to be of single bottom and double hull construction and to be consisted of four (4) pairs of independent cargo tanks and four(4) pairs of wing water ballast tanks.

THERMAL OIL HEATER

Type	-	Vertical, cylindrical
Number	-	Two(2) sets
Working temperature	-	MAX. 230°C
Capacity	-	800,000 kcal/H
Fuel	-	380 cSt at 50°C and MDO

Main Engine and Propulsion Machinery

Hyundai-Himsen
MCR : 2,610 kW x 900 RPM
NCR : 2,218 kW x 850 RPM
Controllable Pitch Propeller (CPP)

Bowthruster

280 kW

Speed/Cons

Laden Speeds / Cons
Abt 12.0 knots on abt 12.50 m/t per day

Ballast Speeds / Cons
Abt 12.5 knots on abt 12.50 m/t per day

Generators

1 Shaft Generator - 300 kW
2 Diesel Generator Sets

Capacities

Cargo Tank Capacity (100%) - abt.6,000 m3
Fuel Tank Capacity (100%) - abt.600 m3
Fresh Water Capacity (98%) - 100 m³
Ballast Tank Capacity - 2,700 m³

Cargo Pump System

Number of Cargo Pumps - 2 sets
Type of pumps - Electric motor driven, horizontal, screw type, jacketed
Pump ratings - 400 m3/h

Cargo Heating

- A dedicated thermal oil circuit is installed for cargo heating
- Asphalt cargo heating design criteria
- Maximum keeping temperature : 230°C
- Temperature raising capacity
Increase the temp. by 10° per 72 hours up to 230°C for a full cargo load
Ambient conditions
Sea water temp. 0°C
Air temp. -5°C

Ballast Pumps

Number - 2 Sets
Type - Elec. motor driven ,Horizontal centrifugal self priming
Capacity - 200m3/H x 20 M

The vessel, being a bitumen carrier, is unable to ballast/deballast concurrently with cargo operations as the tanks need time for cooling, resp. heating up before and /or after the cargo operations.

Tank Coatings

Cargo Tanks - Not coated
Ballast Tanks - Epoxy Coating 300 microns

Deck Gear

Max. Lifting load - 4.0 Tonnes

All details are about and without guarantee and subject to final confirmation from yard.