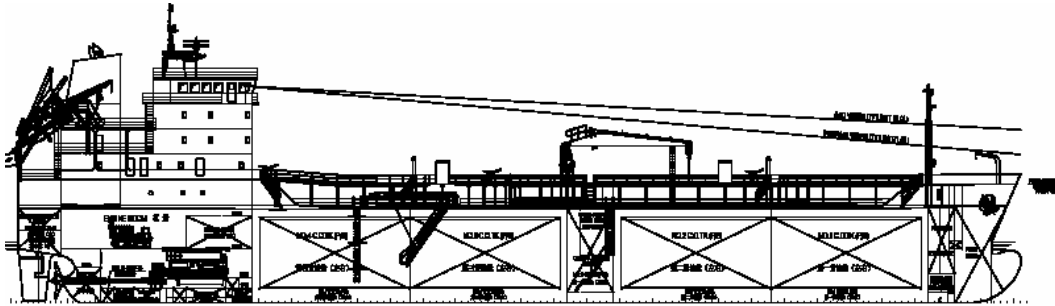


6,000 DWT BITUMEN TANKER

GENERAL PARTICULARS



The vessel to be designed for the carriage of Bitumen and Product oil (F.P.>60°C). Specific gravities of cargoes to be from 0.924 t/m³ up to 1.04 t/m³ and temperatures up to 200°C.

Classification

BV Asphalt Carrier (Independent tank, Maximum cargo temperature ≤200°C)/ Oil Tanker, F.P.>60°C, ESP, Ballast Water Management Plan CSM AUT-O

Flag - TBA
 Built - Gezhouba Shipbuilding Co.Ltd, China

Principal Dimensions

Deadweight - 6,000 tdw
 Draft (Design) - 6.50 m
 LOA - abt.106.84 m
 LBP - 101.50 m
 Breath (Moulded) - 17.60 m

Cargo Tanks

Main Cargo Tanks - The Cargo area has a double skin throughout, subdivided into two (2) main cargo sections, with a pump room between the two cargo sections. Each main cargo section is further subdivided into four (4) watertight compartments, containing independent cargo tanks.

Main Engine and Propulsion Machinery

Yanmar 8N330-EN
 MCR 3,310 KW x 620 r/min
 CSR (85% MCR) 2,813 KW x 587.3 r/min

Speed/Cons

Service speed to be abt. 13 knots on abt. 12.7 t/d.

Generators

2 Diesel Generator Sets - 400kW

Capacities

Cargo Tank Capacity (100%)	-	abt.5,840 m3
Fuel Tank Capacity (100%)	-	abt.360 m3
Fresh Water Capacity (98%)	-	180 m m ³
Ballast Tank Capacity	-	2,770 m ³

Cargo Pump System

Number of Cargo Pumps	-	2 Sets
Type of pumps	-	M. D. twin screw pump, vertical, with jacket heater and casing insert
Pump ratings	-	320 m3/h

Cargo Heating

A dedicated thermal oil circuit consisting of oil fired thermal oil heater to be installed for cargo heating.

Maximum holding temperature 200°C

Temperature raising capacity Increase the temperature by 10°C per 24 hours, up to 200°C for a full cargo load

Ballast Pumps

	:	Two (2)
Type	:	M.D. vert. centrifugal with self-priming device
Capacity	:	130 m ³ /h
Total head	:	0.22 MPa

The vessel, being a bitumen carrier, is unable to ballast/deballast concurrently with cargo operations as the tanks need time for cooling, resp. heating up before and /or after the cargo operations.

Tank Coatings

Cargo Tanks	-	Not coated
Ballast Tanks	-	NTE 300 microns

Deck Gear

Cargo hose handling cranes	-	4 tonnes (SWL)
----------------------------	---	----------------

All details are about and without guarantee and subject to final confirmation from yard.