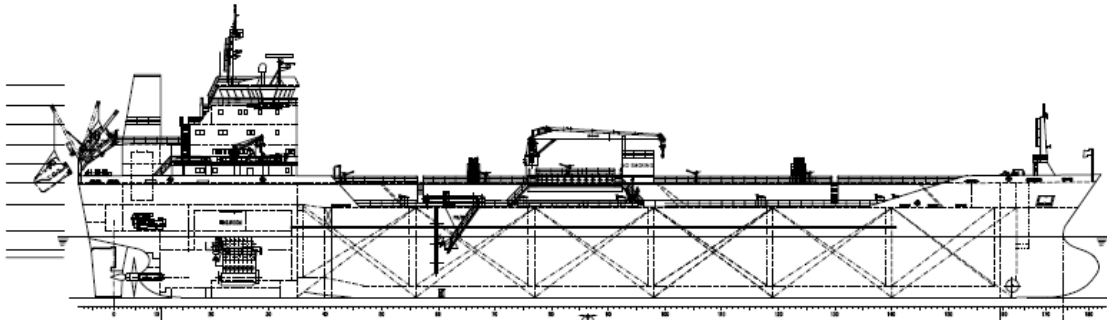


17,055 DWT IMO II CHEMICAL TANKERS GENERAL PARTICULARS



The vessel is an IMO II double hull Chemical tanker capable of carrying liquid product oil, vegetable oil and IMO II and III Chemicals in bulk.

The vessel is constructed with six (6) pairs of cargo tanks and one pair of slop tanks and 6 pairs of ballast tanks.

The cargo tanks are segregated into six grades with double valve segregation and six independent cargo piping systems. The cargo handling system to be able to perform discharging of 6 grades of cargo oil simultaneously.

Classification

BV I +HULL +MACH, OIL/CHEMICAL TANKER IMO TYPE II,ESP, UNRESTRICTED NAVIGATION, AUT-UMS, MON-SHAFT, IGS, VCS, INWATERSURVEY, CLEANSHIP.

Flag	-	Panama
Built	-	Jingang, China.

Principal Dimensions

Deadweight (Summer)	-	17.055mt
Draft (Summer)	-	8.90 m
TPC (SSW)	-	28.469 mt
Deadweight (Winter)	-	16.529 mt
Draft (Winter)	-	8.71 m
LOA	-	144.22 m
LBP	-	134.00 m
Breath (Moulded)	-	23.00 m
GT	-	11,633mt

Cargo Tanks

Main Cargo Tanks	-	6 Pairs of Main Cargo Tanks (P & S) 1 Pair of Slop Tanks (P & S)
------------------	---	---

Main Engine and Propulsion Machinery

B&W7S35MC
 CSR (90% of MCR) 4662 kW x 167 rpm
 Burning HFO (380 cst)
 Fixed Pitch Propeller

Bowthruster

750 kW

Speed/Cons

About 14 knots on about 20.5 mt / day

Generators

3 x 600 kW
 Burning HFO (380 cst)

Capacities

Cargo Tank Capacity (98%)	-	18,614,43 m ³
Slop Tanks (98%)	-	563.73 m ³
Heavy FO Tank Capacity (98%)	-	589 m ³
Fresh Water Capacity (98%)	-	430 m ³
Ballast Tank Capacity (98%)	-	7,820 m ³

Cargo Pump System

Number of Cargo Pumps	-	12 (plus 2 slop tank) hydraulic type deep well
Type of pumps	-	Framo submerged centrifugal pumps
Cargo pump ratings	-	335 m ³ /hr each pump Max Discharge rate 2000 m ³ / hr
Slop tank pump rating	-	100 m ³ / hr each pump
Segregations	-	6 full double valve segregations.

Cargo Heating

The cargo heating system is designed for maintaining cargo at 60°C with ambient air temperature -5°C and a sea temperature 0°C.

Also the cargo heating system is designed for raising the cargo oil temperature in all cargo tanks from 44°C to 66°C within 96 hours with full content of oil and an ambient air temperature of -5°C and a sea water temperature of 0°C as well as for raising the temperature of oily water in the slop tanks (about 50% capacity) and recovery tanks from 15°C to 66°C within 24 hours under the same conditions.

Ballast Pumps

Two sets of single stage, vertical centrifugal	-	500m ³ / hr each
--	---	-----------------------------

Tank Coatings

Cargo Tanks	-	Phenolic Epoxy 3 x 100 microns for 1 vessel APC Marineline 784 for 3 vessels
Ballast Tanks	-	Epoxy Mastic 2 x 175 microns

IG System

A marine diesel oil fired inert gas generator is fitted with a capacity of 2,500 m³ / hr and is suitable to fully inert all cargo / slop tanks from Gas Free condition to below 5% O₂ content.

The vessel is also fitted with a Nitrogen storage rack for 20 bottles. Flexible hose manifold and double valved pipe work are connected to the inert gas main.

Tank Cleaning	-	26 machines in total. Minimum of 2 per tank plus one In each slop tank
----------------------	---	---

Deck Gear

Hose handling crane	-	10 mt with 3 m outreach
Provision hoist davit	-	1.2 mt SWL

Additional

The vessel is fitted with four sets of FO tanks, two for low sulphur and two for normal HFO.

Accommodation

19 Western style accommodation.
Plus 6 Suez Canal transit.

All details are about and without guarantee and subject to final confirmation from yard.